

# SUMMIT AT COURT DRIVE

## SITE CHARACTERISTICS

- ◆ Gently rolling terrain
- ◆ Environmental studies available
- ◆ Zoned Medical, Office, Institutional and I-2

## UTILITIES

### Electricity

- ◆ Provided by City of Gastonia

### Natural Gas

- ◆ Provided by PSNC Energy, A Scana Company
- ◆ 6" Line

### Water

- ◆ Provided by City of Gastonia
- ◆ 12" Line

### Sewer

- ◆ Provided by City of Gastonia
- ◆ 8" Line

## TRANSPORTATION

### Highways

- ◆ Access via New Hope Road or Court Drive
- ◆ Interstate 85 less than a mile
- ◆ Interstate 77 twenty miles
- ◆ Interstate 40 thirty miles



### Airports

- ◆ Charlotte Douglas International Airport — 15 miles
- ◆ City of Gastonia Municipal Airport — 10 Miles

## GENERAL

- ◆ 39 Acres Available; can be subdivided
- ◆ \$ 135,000 to \$150,000 per acre

## COMPANIES LOCATED IN PARK

Company	Lot Acreage	Square Feet Building	Anchor Tenant
630 to 600 Summit	8.5	105,000	Gaston Internal Medicine
Caromont Pediatric Partners	1.91	8,600	Caromont Pediatric Partners
CVS Pharmacy	1.61	10,000	CVS Pharmacy
USDA	4.09	35,840	Agricultural Marketing Services
Court Plaza	2.87	10,000	Carolina Foot and Ankle
Summit Crossing Place	3.58	8,500	Ortho Carolina

# The Summit at Court Drive



1 inch equals 300 feet



**Water**  
12" water lines provided by the City of Gastonia

**Sewer**  
8" sewer line provided by the City of Gastonia

**Natural Gas**  
6" gas line provided by Public Service Gas Company of North Carolina

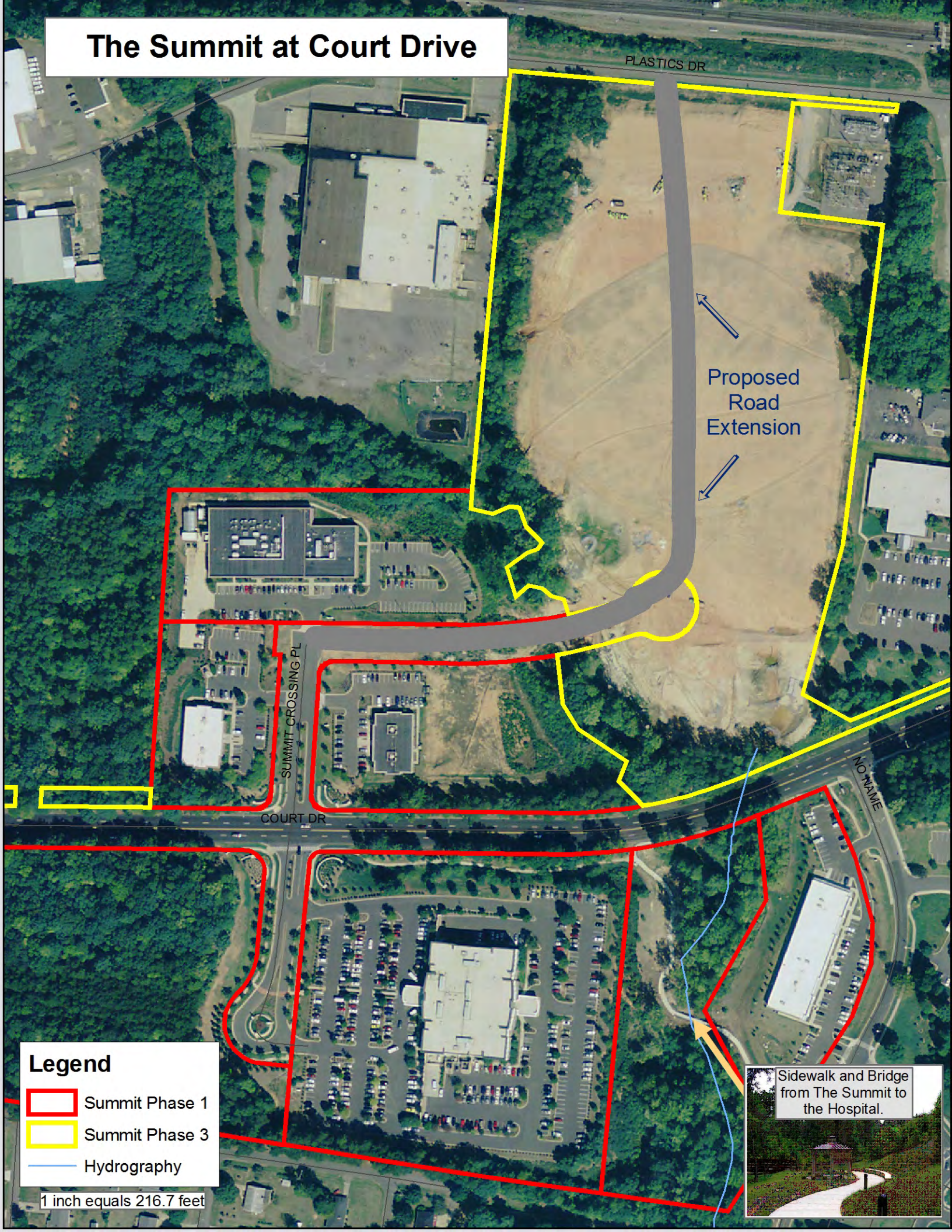
**Electricity**  
Power to the site provided by the city of Gastonia. Discounted electric rates are available to qualified customers.

**Telephone**  
State-of-the-art telecommunications/fiber optic services provided by the Southern Bell Company

The medical office park is located within the city of Gastonia and consists of approximately 70 acres that is zoned Medical, Office, Institutional and I-12.



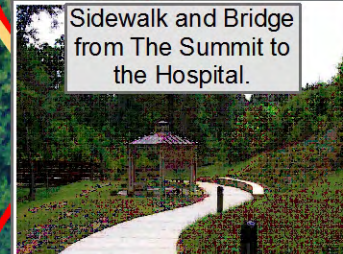
# The Summit at Court Drive

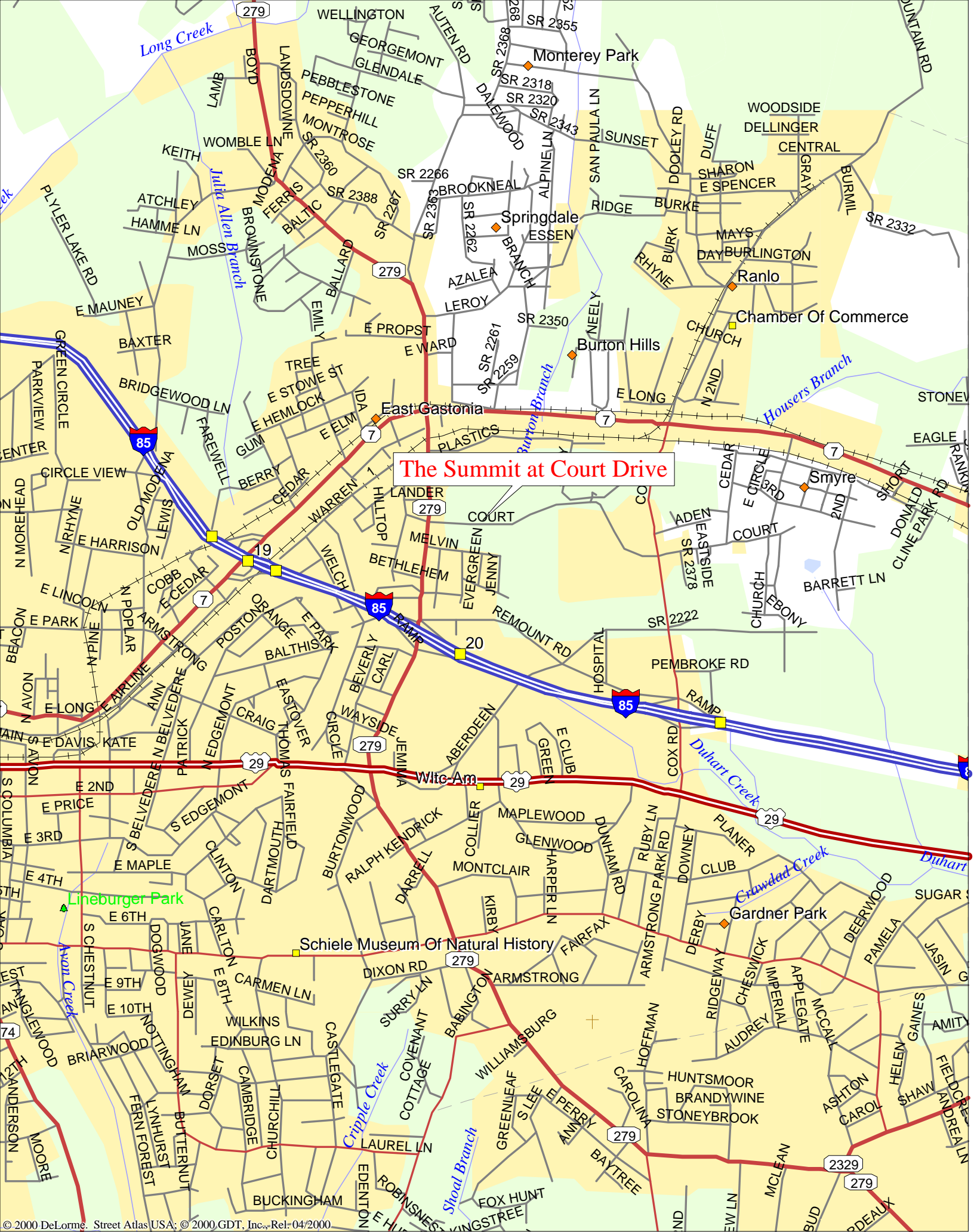


## Legend

-  Summit Phase 1
-  Summit Phase 3
-  Hydrography

1 inch equals 216.7 feet





The Summit at Court Drive

