

# Gibson Industrial Park

**Dallas, North Carolina**

---

Location	Gaston County, North Carolina.  Dallas-High Shoals Road via US 321 and NC 279
Acres	40 Total Acres, 33 Acres Available
Utilities	<i>Water:</i> 8" line, Town of Dallas <i>Sewer:</i> 8" line, Town of Dallas <i>Electricity:</i> Optional; REA or Town of Dallas <i>Gas:</i> PSNC
Topography	Flat to gently sloping
Rail	No
Airport	Charlotte-Douglas International Airport, 20 miles northeast via I- 85.
Zoning	Commercial/Industrial
Price	\$40,000 per acre.

## ***COMPANIES LOCATED IN PARK:***

COMPANY	LOT ACREAGE	SQ. FT. BUILDINGS	NUMBER EMPLOYEES	OPERATION BEGAN
Watson-Hegner	1	10,500	3	1993
Orkin	1	2,000	10	1992
Profero Systems	4.4	11,500	18	1996

# Gibson Industrial Park

John Gibson Warehouse

Gibson Machine Company  
3.23

6.21

18.08

Regent Properties LLP  
0.8

3.2

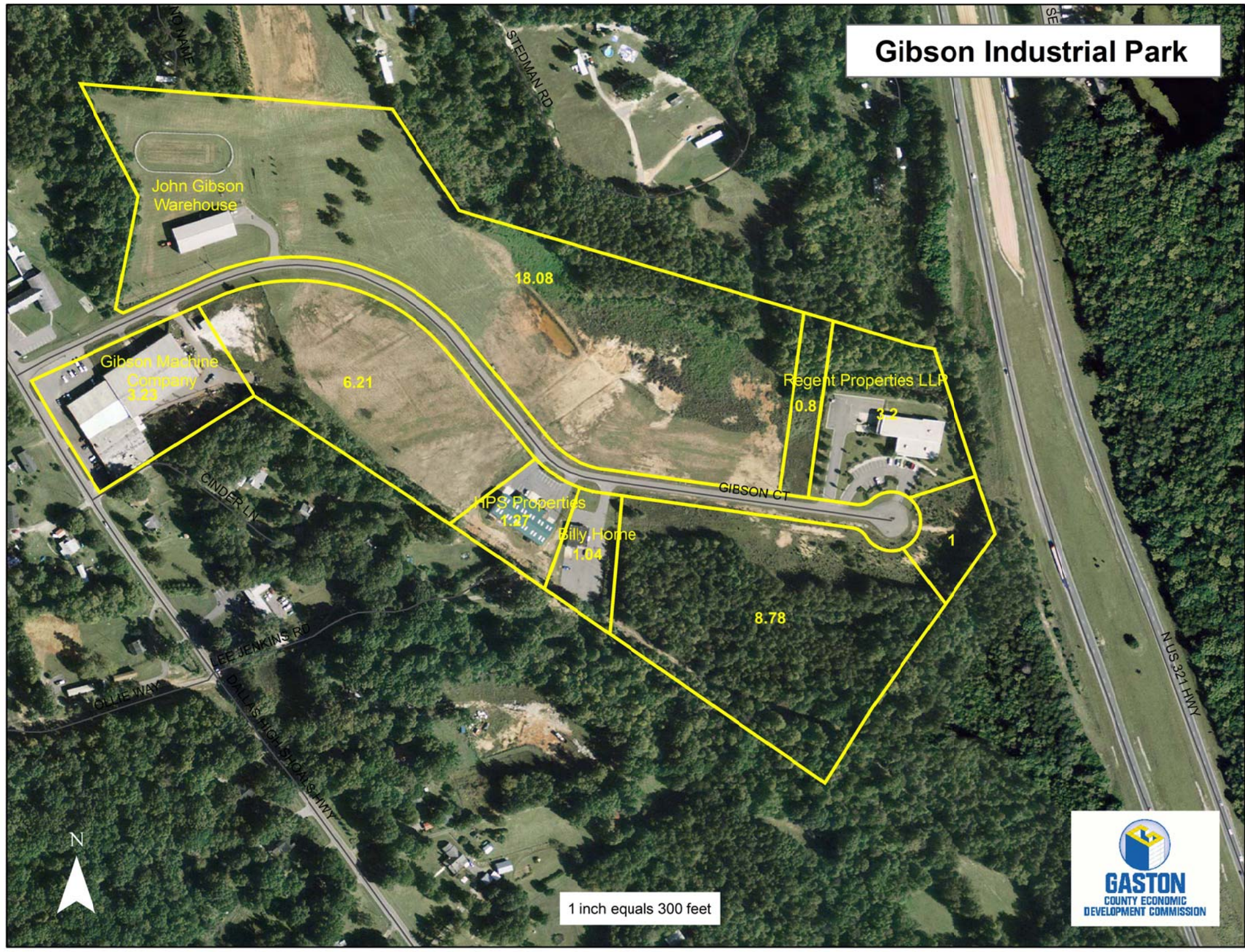
HPS Properties  
1.27

Billy Home  
1.04

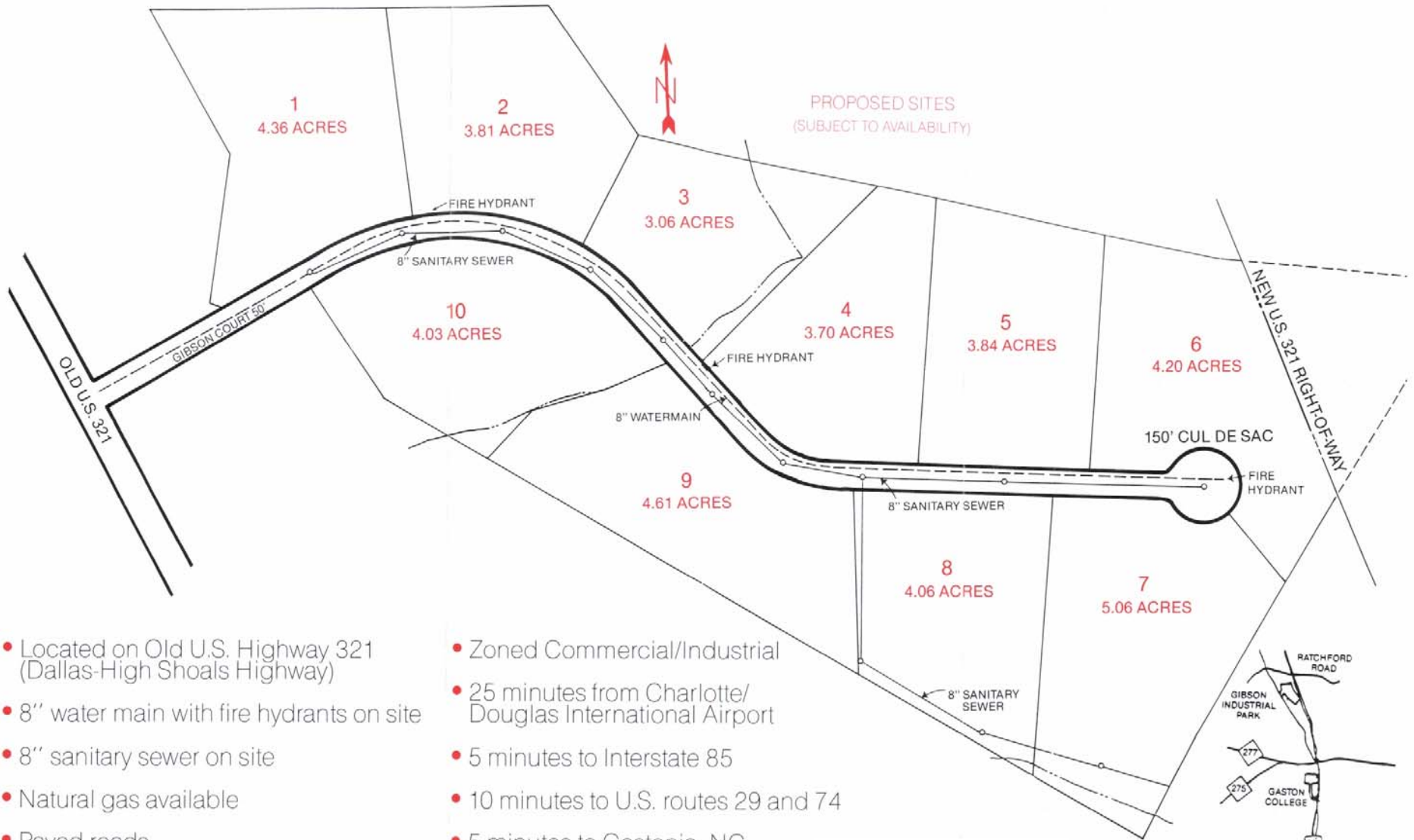
8.78

1

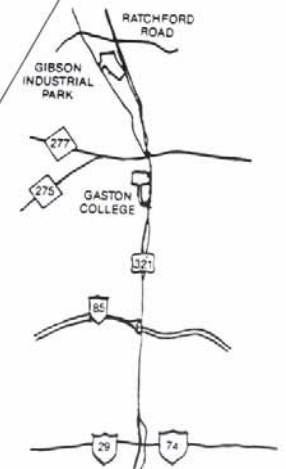
1 inch equals 300 feet



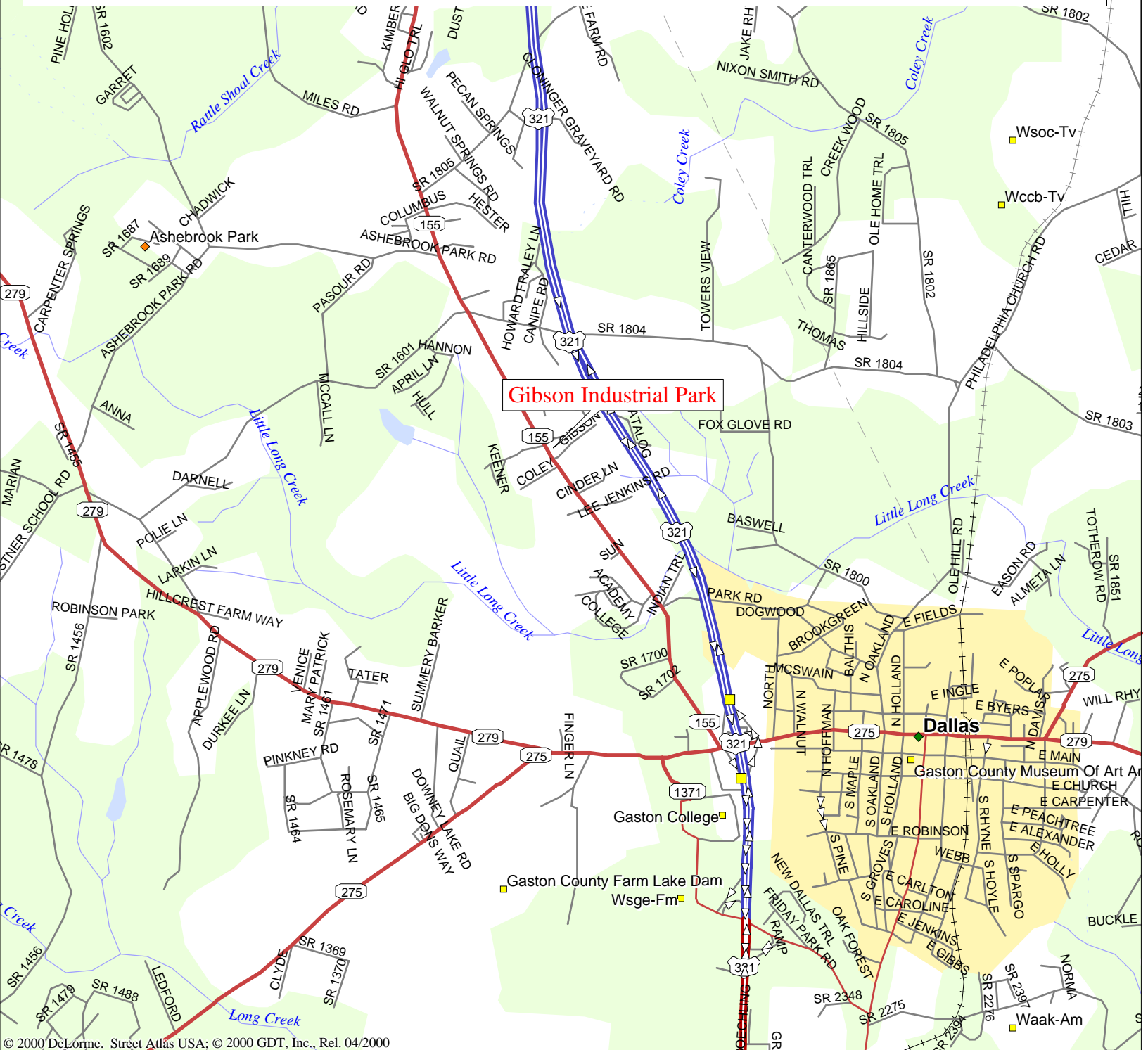
# GIBSON INDUSTRIAL PARK



- Located on Old U.S. Highway 321 (Dallas-High Shoals Highway)
- 8" water main with fire hydrants on site
- 8" sanitary sewer on site
- Natural gas available
- Paved roads
- Lot sizes subject to availability (may vary in dimensions)
- Zoned Commercial/Industrial
- 25 minutes from Charlotte/Douglas International Airport
- 5 minutes to Interstate 85
- 10 minutes to U.S. routes 29 and 74
- 5 minutes to Gastonia, NC



# Gibson Industrial Park



© 2000 DeLorme, Street Atlas USA; © 2000 GDT, Inc., Rel. 04/2000

Mag 14.00  
 Tue Jul 02 16:26 2002  
 Scale 1:31,250 (at center)  
 2000 Feet  
 1000 Meters

- |  |                           |  |                    |  |                    |
|--|---------------------------|--|--------------------|--|--------------------|
|  | Local Road                |  | Point of Interest  |  | Intermittent River |
|  | Major Connector           |  | Small Town         |  | Locale             |
|  | State Route               |  | Railroad Abandoned |  | Population Center  |
|  | Interstate/Limited Access |  | Water              |  | Woodland           |
|  | US Highway                |  | River/Canal        |  |                    |
|  | Exit                      |  |                    |  |                    |
|  | Utility/Pipe              |  |                    |  |                    |
|  | Railroad                  |  |                    |  |                    |

